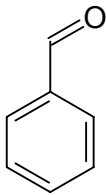
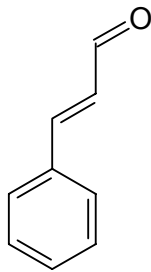


# Strukturformeln von Biomolekülen

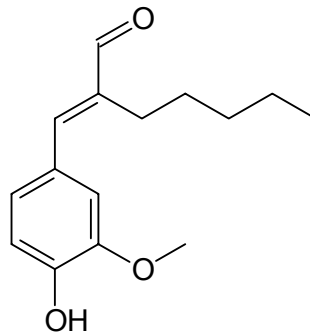
## Aromastoffe



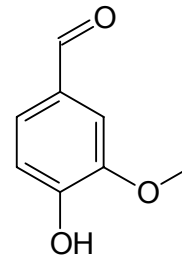
**Benzaldehyd**  
Mandel



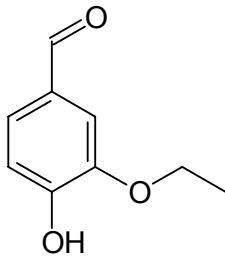
**Zimtaldehyd**  
Zimt



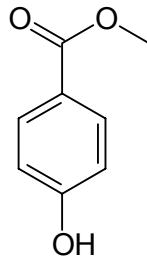
**Zimtaldehyd-Derivat**  
Jasmin



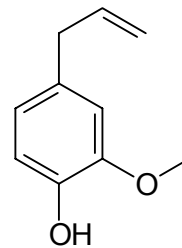
**Vanillin**  
Vanille



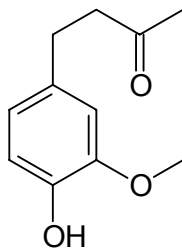
**Vanillal**  
Vanille (intensiver)



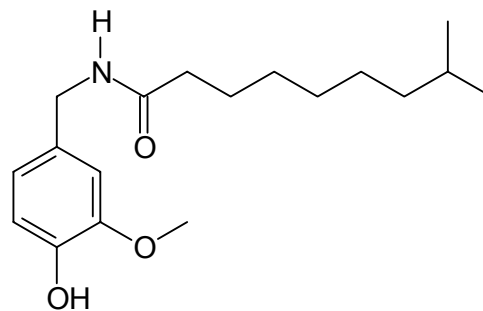
**Methylsalicylat**  
Wintergrün



**Eugenol**  
Nelke

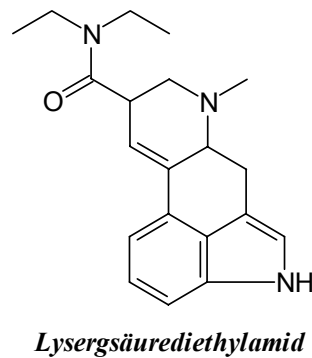
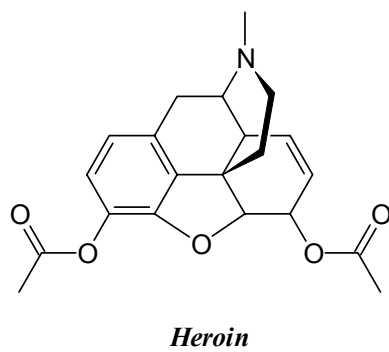
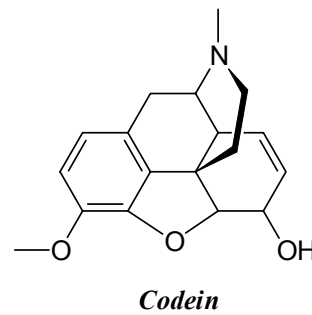
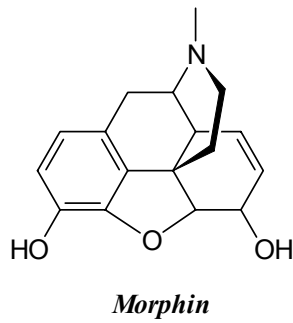
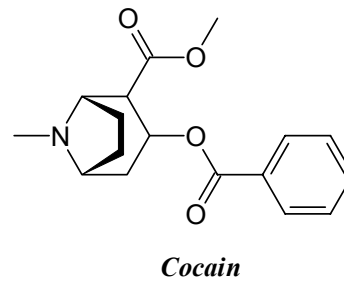
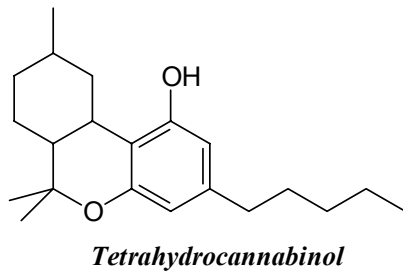
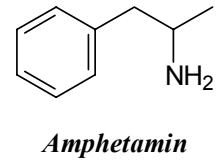
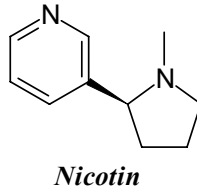
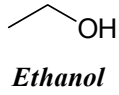


**Zingeron**  
Ingwer

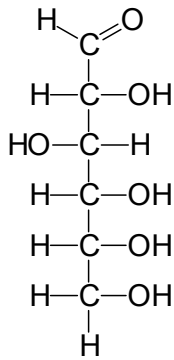


**Capsaicin**  
Pfeffer

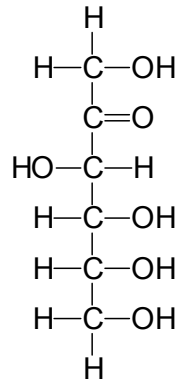
## Genussmittel und Drogen



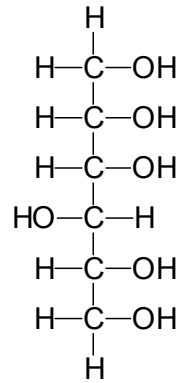
## Süsstoffe



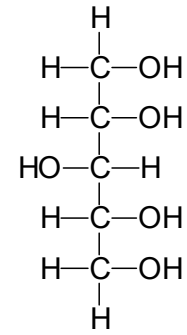
Glucose



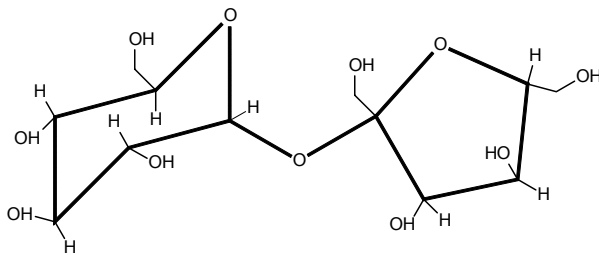
Fructose



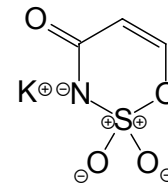
Sorbit



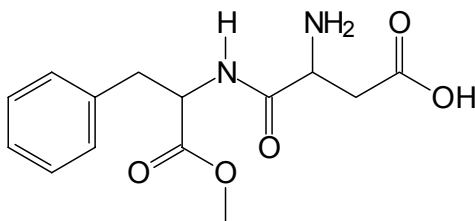
Xylit



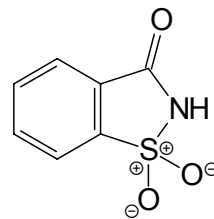
Saccharose



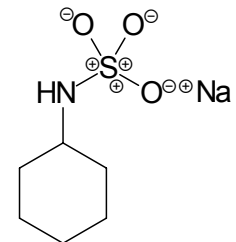
Acesulfam-K



Aspartam



Saccharin



Cyclamat